

CORRECTION

Correction: Migratory Patterns of Wild Chinook Salmon *Oncorhynchus tshawytscha* Returning to a Large, Free-Flowing River Basin

John H. Eiler, Allison N. Evans, Carl B. Schreck

There are multiple errors in the caption for [Fig 6](#), “Movement rates for individual Yukon River Chinook salmon returning to the Salcha and Big Salmon rivers during 2002–2004.” Please see the complete, correct [Fig 6](#) caption here.



 OPEN ACCESS

Citation: Eiler JH, Evans AN, Schreck CB (2015) Correction: Migratory Patterns of Wild Chinook Salmon *Oncorhynchus tshawytscha* Returning to a Large, Free-Flowing River Basin. PLoS ONE 10(7): e0134191. doi:10.1371/journal.pone.0134191

Published: July 28, 2015

Copyright: © 2015 Eiler et al. This is an open access article distributed under the terms of the [Creative Commons Attribution License](#), which permits unrestricted use, distribution, and reproduction in any medium, provided the original author and source are credited.

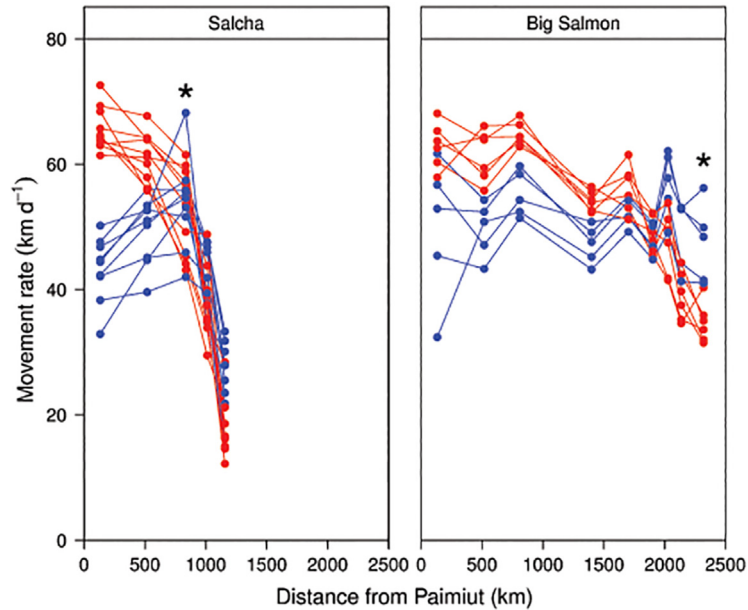


Fig 6. Movement rates for individual Yukon River Chinook salmon returning to the Salcha and Big Salmon rivers during 2002–2004. The fish shown include the upper 10% (red circles, referred to as “hares”) and the lower 10% (blue circles, referred to as “tortoises”) on the Axis 2 gradient from a nonmetric multidimensional scaling (NMS) ordination. The first station passed after leaving the Yukon River main stem is also indicated (*).

doi:10.1371/journal.pone.0134191.g001

Reference

1. Eiler JH, Evans AN, Schreck CB (2015) Migratory Patterns of Wild Chinook Salmon *Oncorhynchus tshawytscha* Returning to a Large, Free-Flowing River Basin. PLoS ONE 10(4): e0123127. doi: [10.1371/journal.pone.0123127](https://doi.org/10.1371/journal.pone.0123127) PMID: [25919286](https://pubmed.ncbi.nlm.nih.gov/25919286/)